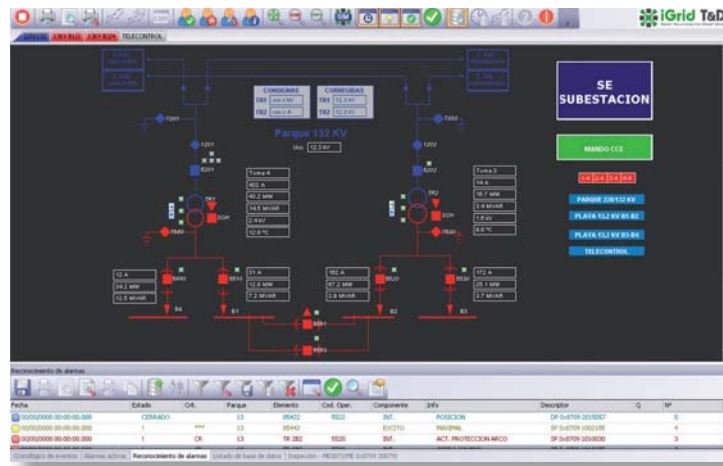


## The Energy Control

The automation of the power grid requires the use of SCADA systems for the local control of each facility as well as for the management of the entire network.



**iControl** SCADA system solves these problems by allowing not only the local control of one facility, but also managing a complete network of thousands of devices and several simultaneous communications protocols.

**iControl** is specially designed for the energy sector, with a simple interface for its operation and configuration, fitting on any utility control need, regardless of the communication protocol, the type of RTU to connect to, or the architecture (standalone, client/server or redundant).

### PRODUCT HIGHLIGHTS

- IEC61850 client
- Other available protocols : IEC60870-5-101, IEC60870-5-104, DNP3.0 and Modbus
- Total screen and components costumization according to customer requirements
- SQL historical data storage
- Tailored automatic reporting (pdf, doc,...) which can be sent by email to the utility staff
- Switching between the Configuration and Runtime modes without disconnecting the system's operation
- Multiple architecture availability, from standalone for substation automation, to complex configuration with redundancy schemas and client/server connections
- Easy to deploy and backup. Does not need installation procedure. Just copy to a PC and run it
- Multilanguage support

# Substation automation SCADA

---



**iControl** is the solution for substation and generation plants automation, connecting directly to the RTU, via serial channel or LAN.

**iControl** communicates with any type of RTUs, regardless of manufacturer, as it uses standard communication protocols (IEC61850, IEC60870-5-101/104, DNP3.0, Modbus).

In IEC61850 substations, **iControl** acts as MMS data client or GOOSE subscriber, connected to the substation network, not only to the RTU, but also to all the protection relays and measurement devices.

## Technical Specifications

---

### › Features

- Controls tens of thousand of points (DI/DO/AI/AO/ counters)
- Standalone, Client / Server and redundant architecture
- Communicates with thousands of RTUs and IEDs
- Compatible with any type of RTU and device, regardless of manufacturer

### › Communications

- Implementation of most widespread protocols:
  - IEC60870-5-101
  - IEC60870-5-104
  - IEC61850
  - Modbus
  - DNP3.0 (serial and TCP)
  - Profibus DP
  - DLMS
  - IEC60870-5-102
  - IEC60870-5-103

- Support for any physical media:

- RS-232/RS-422/485
- GSM or PSTN (Public Switched Telephone Network)
- 3G/GPRS
- Ethernet

### › Data

- Easy configuration with our free iConf tool
- SQL storage
- Tailored automatic reporting (pdf, xls, doc)
- Export data to standard formats such as CSV for later processing of data
- Automated backup processes

### › Stand Alone

- Single computer SCADA system
- Focused on the substations and generation plant automation or HMI bay control

# Controlling and monitoring the distribution grid

**iControl** is a reliable mid-range SCADA for distribution grids, which allows a really easy deployment for a fast grid control, which allow any required architecture, from simple server to complex redundant schemas with remote clients for the grid operators.

**iControl** generates tailored reports periodically for the utility record, or event based, when any alarm is activated. The report can be sent to the utility staff for a fast maintenance action.

Fecha	Estado	Crit.	Parque	Elemento	Cod. Oper.	Componente	Info	Descriptor	Q	Nº
00/00/0000 00:00:00.000	FINAL	***	13	05433	5533	ALARMA	CONDUCTOR ROTO	SP 0x8709 2010681		19
00/00/0000 00:00:00.000	INICIO	***	13	05433	5533	ALARMA	CONDUCTOR ROTO	SP 0x8709 2010681		18
00/00/0000 00:00:00.000	FINAL	***	13	05434	5534	INT.	FALLA	SP 0x8709 2010683		17
00/00/0000 00:00:00.000	INICIO	***	13	05434	5534	INT.	FALLA	SP 0x8709 2010683		16
00/00/0000 00:00:00.000	ENCHUFAR		13	05422		CARRO	INSERTADO	DP 0x8709 2015058		8
00/00/0000 00:00:00.000	DESENCHUFAR		13	05421		CARRO	INSERTADO	DP 0x8709 2015055		7
00/00/0000 00:00:00.000	CERRADO		13	05421	7521	SEC PAT	POSICION	DP 0x8709 2015056		6
00/00/0000 00:00:00.000	CERRADO		13	05422	5522	INT.	POSICION	DP 0x8709 2015057		5
00/00/0000 00:00:00.000	I	***	13	05442		EXCITO	MAXIMAL	SP 0x8709 1002185		4
00/00/0000 00:00:00.000	I	CR.	13	TR 282	5520	INT.	ACT. PROTECCION ARCO	SP 0x8709 1010030		3
00/00/0000 00:00:00.000	I	CR.	13	TR 283	5530	INT.	OPERO MAXIMAL	SP 0x8709 1010075		2
00/00/0000 00:00:00.000	I	CR.	13	TR 184	5540	INT.	OPERO MAXIMAL	SP 0x8709 1010077		1

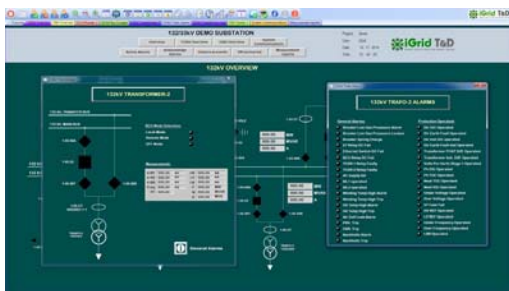
## › Client / Server and redundancy schemas

- **iControl** server will be connected both to the Telecontrol network (from which will receive all data) and to the Intranet of the company.
- **iControl** clients will communicate to the server through the company Intranet. The server will facilitate information of all remote devices.
- Customers represent floating licenses, not tied to a specific computer, which facilitates access to information from different places.

## › System Requirements

- 800Mhz Pentium IV
- XP SP3 or later operating system
- No installation required
- USB dongle protection

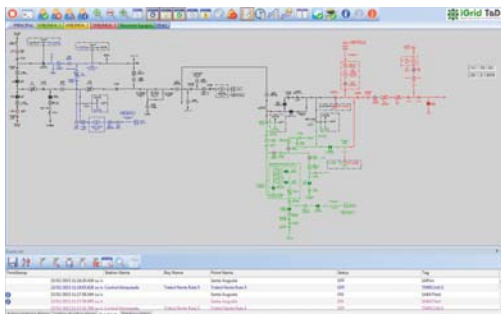
## SMART SOLUTIONS FOR SMART GRIDS



**iControl**  
Substation Edition



**iRTU S3**  
Substation iRTU  
Bay Controller



**iControl**  
Control Center Edition



**iRTUe**  
I/O expansion modules  
for iRTU units

[www.igrtd.com](http://www.igrtd.com)

C/ Marie Curie, 8-14  
Barcelona Advanced Industry Park  
08042 – Barcelona  
Catalunya – Spain

Contact:  
[sales@igrtd.com](mailto:sales@igrtd.com)  
[sat-bcn@igrtd.com](mailto:sat-bcn@igrtd.com)